

No 1 Hetherington Drive





# Number one is Queensland's number one

Number 1 Hetherington Drive is the number one display home in Queensland, as voted by the esteemed panel of judges at the 2005 HIA Queensland Awards.

This is one seriously sexy house. A place that transcends functionality with a sassy opulence that embraces, amongst other things, four ensuites, seven widescreen televisions and an entertaining wing best described as a nightclub.

Lorikeet have created an absolute jaw dropper here, from the funky front door to the chocolate pebble lap pool and outside spa.

This remarkable home beguiles with layers of intrigue and exquisite nuances at every turn.

A short word nails the feeling: wow!

# The only thing overlooked is the golf course



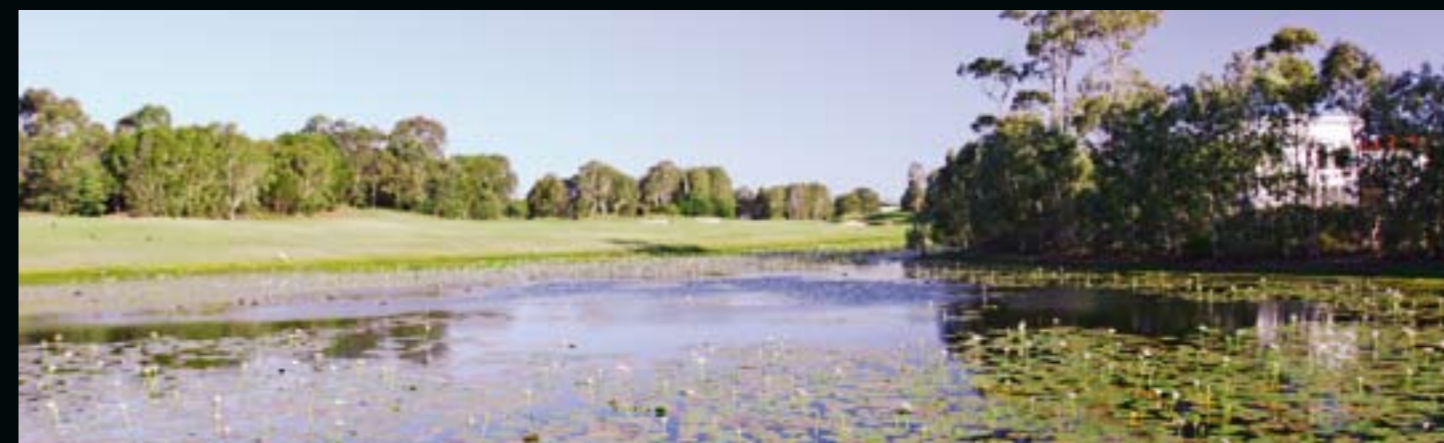
The endlessly green vista from this house is beyond Panavison. It is positively Imax. The long golf frontage views seem somehow stretched. The neighbouring houses appear further away than they actually are. Optical illusions? No, it's more to do with the way the house is so precisely orientated. It faces away from the everyday and focuses instead on the fairway. And so the four bedrooms, the living area, the dining area, the kitchen, the study and the nightclub all have postcard views so wide you have to turn your head to take them in. Stepping outside, there's a sense of quiet nook not found in more minimalist residences. This is evident in the form a Romanesque courtyard with a garden bench upon which to sit and ponder. From here, the garden arcs along a rust coloured ceramic tile wall to native plantings under the shade of a pandanus. Then onwards to a handsome sandstone pathway leading to the remotely controlled front gate.



Heading the other way you encounter the chocolate toned pool and spa, shimmering like a natural pond, with the immaculate Twin Waters golf course 13th hole adding moment as the backdrop.

*"The house sits exceptionally well upon the block. It actually feels like it's tethered to the low arcing winter sun, with all the key elements facing to the North."*

Rohan Jackson – architect



# Heart of the house: the lounge and living area



What the pictures on this page don't convey is the wonderful three-dimensionality of the lounge and living area. Think surround sound and you half get the idea. This is a space where angles and objects delight the eye at every turn. Look up, and there's a lofty bridge leading to the master bedroom, magnificently edged with glass, stainless steel and Jarrah hand rails. Now watch the reflected light dance upon the walls. Beautifully made nicknack shelves infill under the stairway providing a sense of home and hearth within the modern architectural vernacular. A massive canvas dominates the void wall. Then there's that golf course view again, verdant green and lovely through 16 panels of floor to ceiling windows and tri-fold doors. Out of nowhere, concealed curtains roll down for intimate encounters, whilst the interlaced oblong floor tiles reveal a delicate emerald shimmer. The shape of the lounge and living area at Number 1 Hetherington Drive is actually a pentagon. Mr President would feel at home.



*"This space has an intentional clubhouse feel to it. The idea was to create a sense of visual ownership of the adjoining golf course. And so you look out and enjoy this huge and immaculate green space without the burden of having to mow the actual grass."*

JDS Interior Design



This can't be the kitchen – there's no microwave



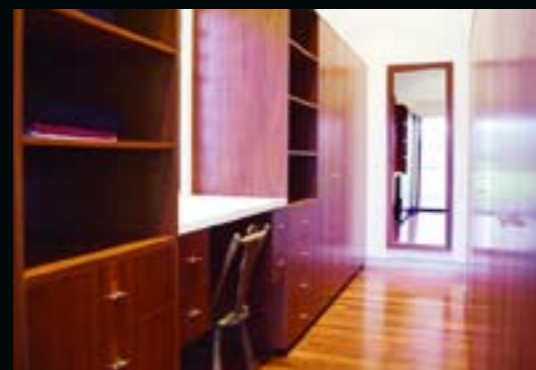
*"Natural limestone and classic use of muted whites in the kitchen both complement the modern house and remind one of the natural beauty just outside the doors."*  
Jess Jackson – architect

Actually there is a microwave. It's just that it's hidden away behind a cantilevered stainless steel fascia. This complements the massive stainless steel gas cooktop, other stainless steel appliances and matching stainless steel drawer handles. The drawers themselves are of the anti-slam variety. They close with such a gentle kiss that you just want to open and shut and open and shut them. The glass splashback behind the deep double bowl sink slots through the vast cream Europa limestone bench top and skirts down to the floor. Nice touch.

At each end of this island unit, the limestone chases down to the floor too. Another nice touch. The pantry is a room, neatly tucked away behind a door horizontally banded with glass. And the glass here marries with the obscure glass doors of the credenza that leads to the formal dining area. And look, from the meal preparation area, there's that golf course view again! No excuse for cooking up bangers and mash in this marvellous temple to Tonacatecutli, the God of Food.



# It gets really sexy in the master bedroom



Can any meaning be attached to the tap water spout that sticks proudly out through the mirror in the master bedroom ensuite? Might have to consult Freud about that one. It's impressive though, however you look at it. And entirely original.

The master walk-in robe is unlike anything you've ever seen before too, accessed via his and her entrances behind a suede bedhead bulkhead. It's all Jarrah and exceptionally cabinet making around here, with a place for everything. In the middle, there's a chair, table and mirror for adjusting ties and fussing over hats.

At the opposite end of the bedroom under the artfully raked ceiling and beyond the custom made king sized bed is the home's other spa. This one is seriously supersized, with bi-folds opening to a dress circle balcony and that ever present golf course view.

Back inside there's a DVD and LCD TV on the wall along with a touch-screen control panel. On the way out marvel at the master bedroom door which opens both inwards and outwards. This is a concept from Lorikeet CEO Scott Gooderham.



*"The custom cabinetry in the master bedroom ensuite is finished in a palette of materials inspired by the natural surroundings. And that controversial tap is the only one in existence."*

Rohan Jackson – architect

# One, two, three other ensuited bedrooms



No padding along hallways to brush one's teeth here. For this is a home where all of the bedrooms in the upstairs son/daughter/guest wing include big, beautiful ensuites. Where on earth was the accountant when they decided on the frameless glass showers screens, the floor to ceiling porcelain tiles, the exquisite tapware and the Italian bowls and matching basins? Think of compromise and this is the opposite. Fresh. New. Inspired. Opulent even. With a fastidious attention to detail that underscores a quite perfect build quality. Each bedroom has a wall mounted widescreen television, DVD and cbus switching. It could take a lot of work to get guests to leave.

*"Why shouldn't every bedroom have its own ensuite? I can't imagine why other architects haven't thought of it before."*

Guest of the house



# The cinema



You kind of feel like clapping your hands and saying 'open sesame' as the big and perfectly designed walls within walls slide and glide away to open up the dedicated multiplex type cinema.

This is the real deal, with BOSE home theatre surround sound, a massive recessed drop down projection screen for DVDs, a big plasma 16:9 monitor for free to air and pay, and seats that, as they say, afford cloud like comfort.

The classic plush velvet floor-to-ceiling cinema style curtains are a nice touch, too.



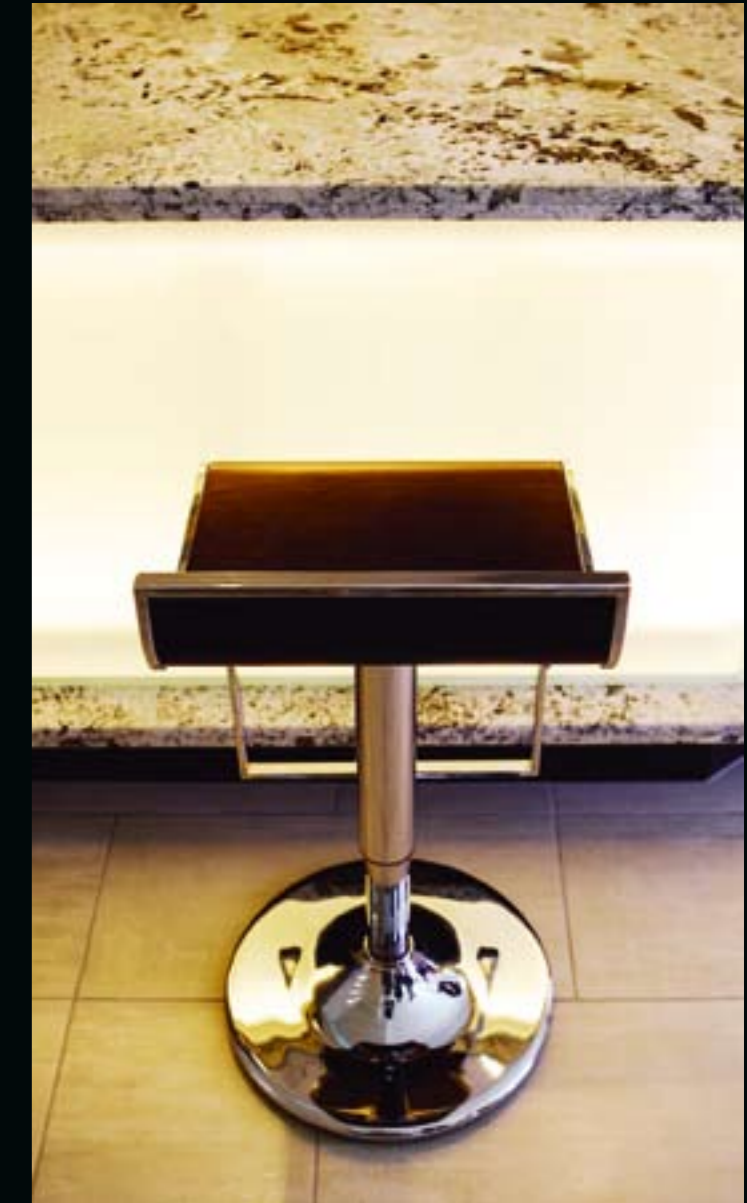
# The nightclub



The commercial sized fridge behind the bar might worry your liver, but what the. This is the ultimate boys' room and it doubles as a disco when the girls get into karaoke and cocktail mode.

The ice maker is industrial strength. The pool table was custom made to match the recessed disco blue ceiling edge lighting. There are floor to ceiling sliders to let the smokers out.

Louvres, wall mounted plasma tv, BOSE sound, cool stools, and a dedicated entrance way make this the best home bar, bar none.





# Tech specs



Video security, remote control sliding front gate, cbus wiring that allows all of the lights in the house to be operated from any of the light switches in the house, LCD TVs and DVDs in every bedroom, 2 x Plasma TVs, 2 x BOSE home theatre sound systems, a commercial fridge, a commercial ice making machine, two dishwashers, a recessed remote control drop down projection screen, a security lighting pattern that leads robbers to think someone is home when they're not, a lap pool and spa heated to different temperatures fully on autopilot, and a server to drive pretty much everything.

It's all very cool, very chic, and beautifully integrated. This is just-shipped technology that works effortlessly to deliver a smart home verging on mensa.



*"It's as close to a futuristic Jestsos house as I've ever seen. But the thing is, it's all been designed to be usable by the your average technophobe. Even my nan could do it and she's still challenged by the concept of a toaster."*

Randal Whybird – electrical contractor

# Details, details, details

# Details, details, details

crazy shelf



sunken blinds



jarrah floor



rain shower



front door



doors



icemaker



Where do you start? How about with the front door. Making it, apparently, involved rewriting the book on tolerances. It took a few goes to get the glass to fit. But wasn't it worth all the effort.

The built-in bookshelves. Imagine piecing them together! Must have been like finding your way through an English manor house maze. But books and stuff in a study come in different sizes, so the design is pragmatic as well as exceptionally pleasing to the eye.

wine cellar



stairs



Ah, the heavenly stairway. This is excellent work. Note how there's a gap between the tread ends and the wall. Creates a nice floating feeling. The sliding walls to the cinema. The elegant purity of the design of these moving walls is impossible to photograph and difficult to describe. Suffice to say that they magically appear and then disappear as required. You could visit this house and not even know the cinema was there. The airborne upstairs intersection. Head South to the loft, North over the bridge to the master bedroom, West along a gantry to the three other bedrooms, or East to step back down to earth. In every direction there's this sense of space and elevation rarely found in upstairs junctions. The multi-surface pathways. Sand stone, cobble stone and decorative concrete combine to give take the dull out of driveway and add a pizzazz to the path. The cellar. This is a room unto itself with sufficient built in racking to lay down several dozen treasures. No need to dust in here.



Suite B, Cornmeal House  
27 Cornmeal Parade  
Maroochydore Qld 4558

P: 5479 6800

F: 5479 5799

W: [www.lorikeet.com.au](http://www.lorikeet.com.au)